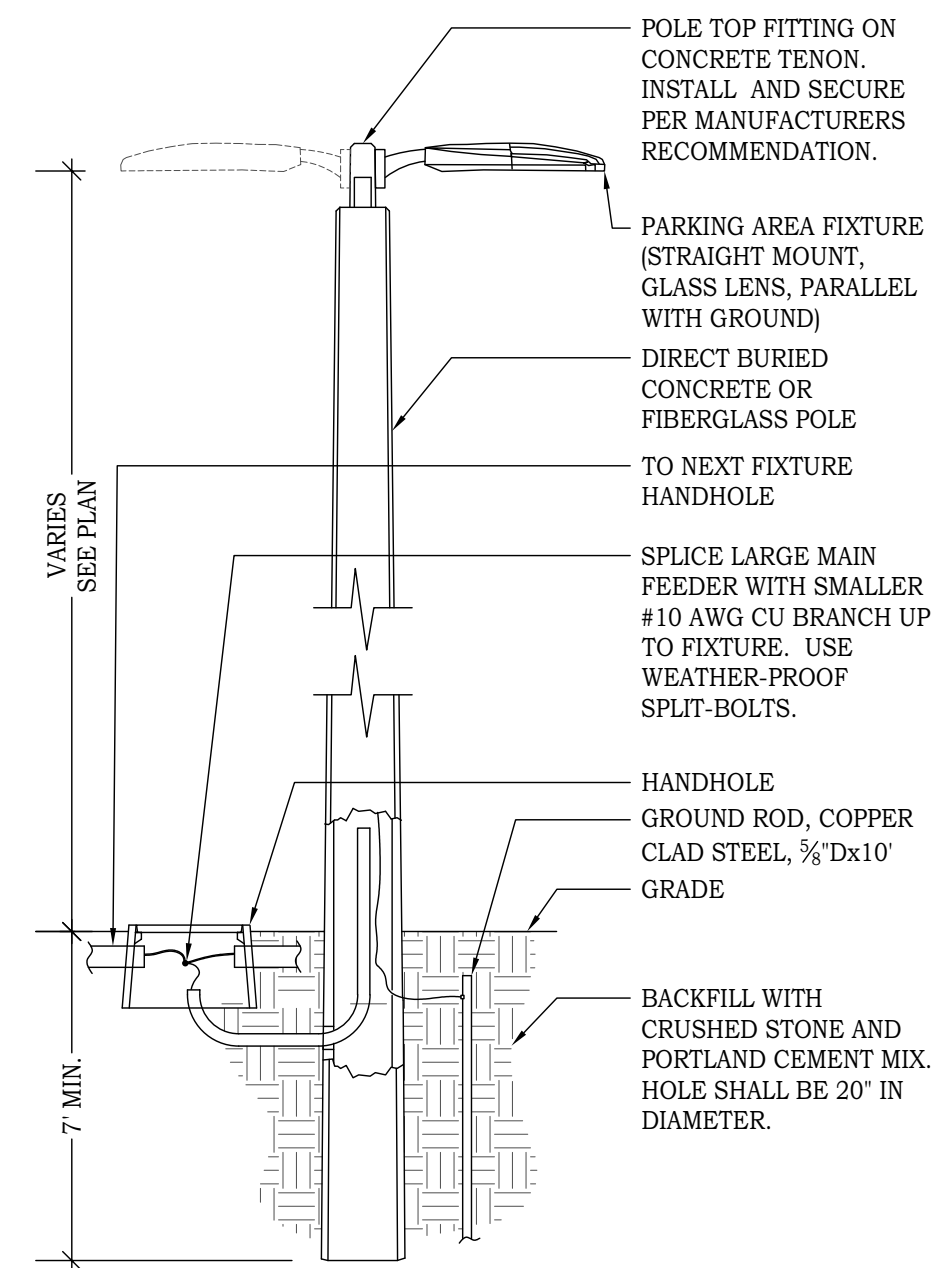


1



NOTE:

POLE AND FIXTURE AS AN ASSEMBLY SHALL MEET THE WIND LOADING REQUIREMENTS OF STATE CODES (F.B.C. BUILDING, CHAPTER 16, SECTION 1620), LOCAL CODES AND ORDINANCES, AND ASCE 7-10 (CHAPTERS 26 THROUGH 31). PROSPECTIVE LIGHTING SUPPLIER SHALL SUBMIT CERTIFIED DATA OF COMPLIANCE.

E1

POLE/FIXTURE DETAIL
N.T.S. E-D200

tgs
TRULY GREEN SOLUTIONS

SKU#: PROJECT NAME: DATE:

ALP™ E Contractor Grade Area Light

DESCRIPTION

The ALP™ E is the ideal choice for illumination of almost any outdoor area. With a variety of lumen packages up to 24,000 lumens, the ALP™ E can replace up to 450W metal halide lamps. The ALP™ E has a variety of optional accessories including photocell receptacles, glare shields, bi-level occupancy sensors, finish colors and mounts. Compatible poles, brackets, and pole accessories are also offered, making the ALP™ E an important part of a complete outdoor solution.

APPLICATIONS

Commercial Parking Lots, Pedestrian Pathways, Street Lighting

FEATURES

Construction
Rugged die-cast aluminum housing.
3G vibration rated compact design to minimize wind load requirements.

Finish
Dark Bronze (Standard), White, Grey, Black

EPA Rating/Enclosure Rating
EPA See Page 4.
Wet Location Rated

Operating Temperature
-40°F - 113°F

Electrical
Input Voltage: 120-277V or 347-480V (Optional)
Projected L70: 100,000 hrs
Surge Protection:
- 6W Standard
- 10W Optional

Power Factor
≥0.9

Controls
1-10V Dimming standard.
Bi-level Occupancy/Daylight Harvesting Sensor available.
On/Off Photocell option available.
Dimulator Dimming Photocell available.

Installation/Mounting
See Page 3.

Optical System
Available in distribution:
Type III, Type IV, and Type V

CCT
Available in:
4000K, 5000K

CRI
≥70

Warranty
5 Year Warranty.
See warranty documentation for more information.

Ordering Information

EXAMPLE: ALPE-200-50-3-U-SQP-D-D0

| Series | Wattage | CCT | Distribution | Input Voltage | Mount | Finish | Control |
|--------|--|----------------------|-------------------------------------|------------------------------|---|---|---|
| ALPE | 40-40W 70-70W 100-100W 150-150W 200-200W | 40-4000K 50-5000K | 3-Type III 4-Type IV 5-Type V | U-120-277VAC H-347-480VAC | SQP (For Square Pole) ROP (For Round Pole) SLF (For Slighter) WAM (Wall Mount) | D- Dark Bronze G- Gray H- Black W- White | D0 (1-10V Dimming Without Control Sensors) D1-3SC (3 Pin Receptacle W/Shortcap) D1-3PC (3 Pin Receptacle W/On/Off Photocell) D1-7SC (7 Pin Receptacle W/Shortcap) D1-7PC (7 Pin Receptacle W/On/Off Photocell) D4 (Bi-level Occupancy/Daylight Harvesting Sensor) DIM4-U- Dimulator 120-277 VAC with 7 pin DIM4-H- Dimulator 480VAC with 7 pin |
| | | | | | | | Accessories |
| | | | | | | | SP-U-10W (10W Surge Protection (120-277V)) ALPE-S-BLS (Back Light Shield (10W-100W)) ALPE-M-BLS (Back Light Shield (150W-200W)) |

Specifications and Dimensions subject to change without notice.

*MOQ and longer lead times may apply, please contact customer service for more information.

1 03172021

9601 Variel Ave | Chatsworth, CA 91311 | Ph: (818) 206-4404 | trulygreensolutions.com

© 2021 Truly Green Solutions. All rights reserved.

tgs
TRULY GREEN SOLUTIONS

SKU#: PROJECT NAME: DATE:

THINTEK™ WAFER R Direct Mount Recessed

DESCRIPTION

The ThinTek™ Wafer series from TGS allows for easy installation from below the ceiling without the need for an existing can and is ideal for shallow ceiling plenum applications. The CCT switch allows for selection between 2700K, 3000K, 3500K, 4000K, and 5000K. With Title 24 certification, 90 CRI, and a variety of sizes and lumen packages, ThinTek™ Wafers provide versatility, reliable performance, and a fast, simple installation process.

APPLICATIONS

Residential, Institution, Hospitality, Retail, Offices, Schools, Hospitals, Airports and Highways.

FEATURES

Construction
Die-cast aluminum housing and PC lens.
Air-tight IC Rated.

Optical System

Glare controlling lens for comfortable light distribution.
Provides a 110° beam angle.

Warranty
5 year warranty.
See warranty documentation for more information.



Ordering Information

EXAMPLE: TWR-F-0308-C-S

| Series | Size/Wattage | CCT Switchable | Input Voltage/Control |
|----------------------------------|--|------------------------------------|--|
| TWR-F - ThinTek Wafer Round Flat | 0306- 3"/6W 0308- 3"/8W 0410- 4"/10W 0412- 4"/12W 0612- 6"/12W 0615- 6"/15W 0818- 8"/18W | C - 2700K/3000K/3500K/4000K/5000K | 5-120VAC/Triac Dimming |
| New Construction Kit | | New Construction Kit W/ Hanger Bar | Accessories |
| TWR-NC (For 3", 4", 6") | | TWR-NCH (For 3", 4", 6") | TW-EC (4" Extension Cable) 90016-H (16W High Voltage Emergency Battery Backup) 90025-H (25W High Voltage Emergency Battery Backup) |

Specifications and Dimensions subject to change without notice.

*MOQ and longer lead times may apply, please contact customer service for more information.

1 01252021

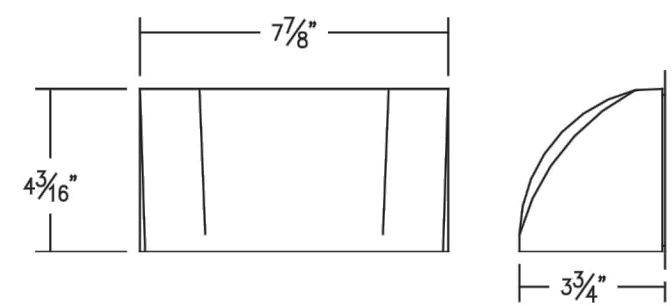
9601 Variel Ave | Chatsworth, CA 91311 | Ph: (818) 206-4404 | trulygreensolutions.com

© 2021 Truly Green Solutions. All rights reserved.

LITON®

TYPE PROJECT
CATALOG#

WD1472- 8" X 4" SCOOP 1-DIRECTION WALL MOUNT (IP65) - 850LM SURFACE 1-DIRECTION WALL MOUNT



SPECIFICATION

Application: This WD1 Series directional wall luminaire can be used in both indoor and outdoor settings and can be pointed up or down. Typical locations are in commercial and retail spaces that contain walls and/or columns that require directional lighting. They can be used as downlight for direct illumination or as uplight for indirect illumination of architecture facades.

Housing: Constructed from two (2) pieces of high grade die cast aluminum with a high grade powder coat finish. Includes a facelate with a tempered glass lens (fits flush to the housing), LED array, reflector, LED driver, silicone gasket and a wire exit hole to junction box wiring. The two piece housing is secured together by four (4) tamper resistant stainless steel set screws.

Mounting: The fixture mounts on to a wall directly over standard 3-1/2" junction box or other similar size junction boxes.

Facelate: One piece die cast aluminum with powder coat finish, and a tempered glass lens (available in clear or frosted).

Reflector: Construction: The one piece, heavy-gauge aluminum reflector prevents ugly dents during shipping and installation. Deeply mounted singular LED provides 50 degree visual cutoff for a glare-free appearance.

Lumen Maintenance: Minimum 50,000 hours L70 life based on ANSI TM-21 calculations from LM80 standardized test results. See ordering guide for more information.

Thermal Management: Effective thermal dissipation facilitated by integral cast-aluminum, finned heat sink design for maximum heat rejection to provide long LED life.

Dimming: (UE-DUN) option is a universal dimming system that works with most 3-Wire ELV, 2-Wire Incandescent and 5-Wire 0-10V fluorescent dimmers.

Electrical: LED driver, 120VAC, 50/60Hz, electronic Constant Current, Class 2, Power Factor > .90pf, integrally mounted. Use LED driver option UE-DUN UnDim (120V/277V) for dimming (see above), and cold weather applications (-30°C and above).

Emergency Options: Emergency LED Battery Back-up available, remotely mounted adjacent to housing by installer. When AC power fails, the device immediately switches to the emergency mode, operating the LEDs for a minimum of 90 minutes. Remote test switch and plate cover included.

Caution: LITON recommends use of surge protectors on the power entering LED Housings. Surge damage is not covered by warranty.

Warranty: Covered by a 5 Year Warranty to be free of defects in materials and craftsmanship. Fixture should not be installed in applications with ambient temperature above 60 degrees C. Doing so will result in reduced lamp life and voided warranty.

Listing: ETL / cETL Listed. Suitable for wet location. Assembled in USA. (IP65).

FEATURES:

| WD1472 | FINISH | LENS | DIMMING | LED | DISTRIBUTION | OPTIONS |
|--------|------------|--------------|-----------------------------|-------------|------------------------------|-------------------------|
| WD1472 | W White* | Blank Clear | Blank Non-Dimming | Blank 4000K | Blank None | Blank None |
| | S Silver* | -FR -Frosted | UE-DUN UnDim (120V/277V) | -T30 3000K | -BIV Type IV (forward throw) | -EMAC Emergency Back Up |
| | BZ Bronze* | | -347-D10 347V 0-10V Dimming | | | -SOL Photocell Sensor |
| | B Black | | | | | |

*25 piece minimum with extended lead times.

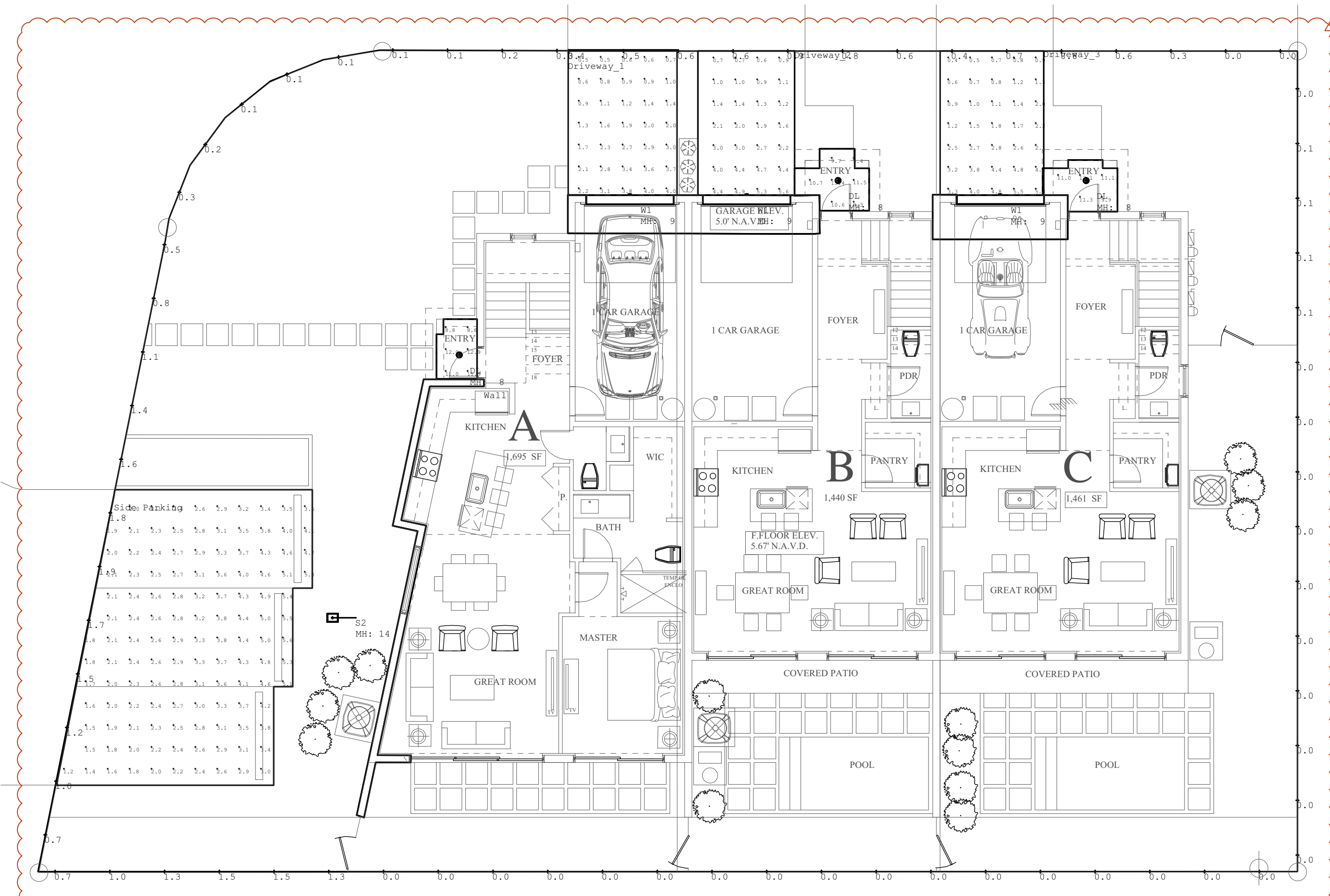
Tel: 323.904.0200

Product specifications subject to change without notice.

www.liton.com

certified
by ETL

ORDERING EXAMPLE: WD1472B-T30-EMAC



PHOTOMETRIC PLAN

1/8" = 1'-0"

1

| SESco Luminaire Schedule | Qty | Label | Tag | Description | Arrangement | Lum. Watts | Lum. Lumens | LLF |
|--------------------------|-----|-------|-------|--|-------------|------------|-------------|-------|
| Symbol | 3 | DL | TGS | TWR-F-0612-C-S (2700K)-S | SINGLE | 11,6264 | 918 | 1,000 |
| | 1 | S2 | TGS | ALP E 40W 4000K Type3 | SINGLE | 39,4713 | 5469 | 0,998 |
| | 3 | W1 | Liton | WD1472-(FINISH)-T30 (File modified to simulate 3K) | SINGLE | 10,79 | 838 | 0,780 |

| SESco Calculation Summary | CalcType | Units | Avg | Max | Min | Avg/Min | Max/Min | PtSpCtB | PtSpCtR | Grid Z |
|---------------------------|-------------|-------|-------|------|-----|---------|---------|---------|---------|--------|
| Label | | | | | | | | | | |
| Driveway 1 Planar | Illuminance | Fc | 1.92 | 4.0 | 0.5 | 3.84 | 8.00 | 2 | 2 | 0 |
| Driveway 2 Planar | Illuminance | Fc | 2.44 | 5.6 | 0.6 | 4.07 | 9.33 | 2 | 2 | 0 |
| Driveway 3 Planar | Illuminance | Fc | 2.26 | 5.8 | 0.4 | 5.65 | 14.50 | 2 | 2 | 0 |
| Entry 1 Workplane | Illuminance | Fc | 10.90 | 12.9 | 8.8 | 1.24 | 1.47 | 2 | 2 | 2.5 |
| Entry 2 Workplane | Illuminance | Fc | 10.66 | 13.4 | 9.3 | 1.15 | 1.44 | 2 | 2 | 2.5 |
| Entry 3 Workplane | Illuminance | Fc | 11.28 | 13.1 | 9.9 | 1.14 | 1.32 | 2 | 2 | 2.5 |
| Property Line | Illuminance | Fc | 0.43 | 1.9 | 0.0 | N.A. | N.A. | 5 | 5 | N.A. |
| Side Parking Planar | Illuminance | Fc | 3.05 | 5.6 | 1.2 | 2.54 | 4.67 | 2 | 2 | 0 |

Digitally signed
by David A
DaSilva
Date: 2021.07.15
15:08:33 -04'00'

This item has been electronically signed and sealed by David A. DaSilva, PE #54739. On July 15, 2021, using a Digital Signature. Printed copies of this document are not considered signed and sealed, and all SHA-1 authentication code and signature must be verified on any electronic copies.

ddc
engineering
inc.

4083 South U.S. Highway 1, Ste. 100
Rockledge, Florida 32955
Phone 321.633.5222 Fax 321.633.4088
www.ddc-engineers.com
dasilva.david@ddc-engineers.com
C.O.A.: 25988
DDC PROJECT NO. 2108

© BARRETTA & ASSOCIATES 2021

PZ-21-120000-19-1

10/20/2021

Barretta & Associates
Architecture
Planning
Design

658 Normandy Ln, Bldg. N
Delray Beach, FL 33484
561-740-0041

Archila
Design
GROUP

ARCHITECTURE

SERVICE

923 San Rafael Rd SW

Palm Bay, FL 32909

PHONE (321) 812-8470